

EQUIP. TYPE R390AURR EXP. NO.

COL. 540 7573 009

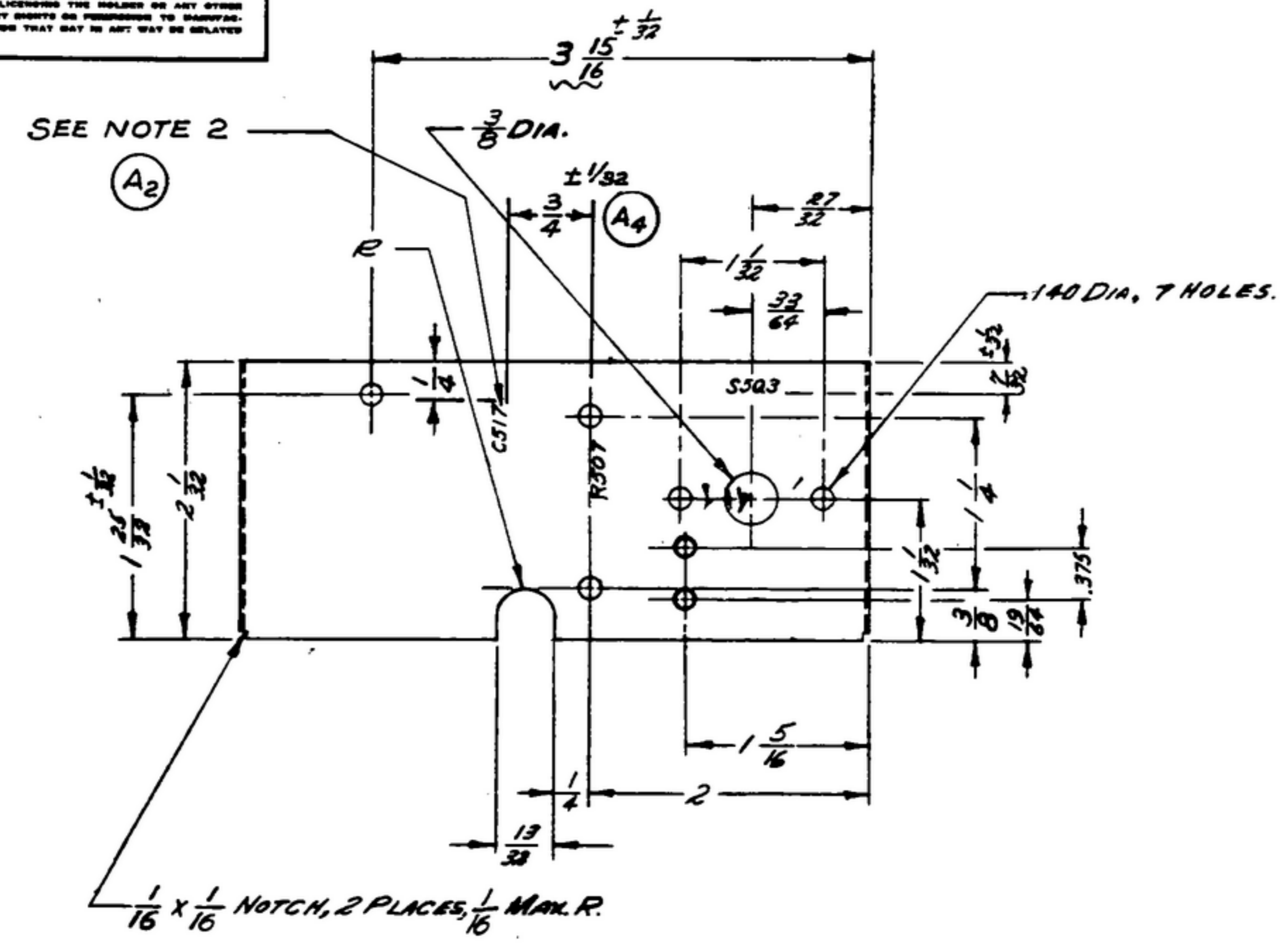
NOTICE: WHEN GOVERNMENT DRAWINGS, SPECIFICATIONS, OR OTHER DATA ARE USED FOR ANY PURPOSE OTHER THAN IN CONNECTION WITH A SEPARATELY RELATED GOVERNMENT CONTRACT, THE UNITED STATES GOVERNMENT THEREBY INCUR NO LIABILITY FOR ANY INADEQUACIES, OMISSIONS, OR ERRORS IN THE DRAWING, SPECIFICATIONS, OR OTHER DATA, NOR IN ANY MANNER LICENSING THE HOLDER OF ANY PATENT OR OTHER RIGHTS OR IN ANY MANNER MAKING THE HOLDER OF ANY PATENT OR OTHER RIGHTS A PARTY TO ANY SUIT OR ACTION IN CONNECTION WITH ANY PATENT OR OTHER RIGHTS THAT MAY IN ANY WAY BE RELATED THERETO.

THIS DOCUMENT HAS BEEN PREPARED BY THE GOVERNMENT AND IS NOT TO BE REPRODUCED OR TRANSMITTED IN ANY MANNER WITHOUT PERMISSION OF THE GOVERNMENT.

\* FOR INFORMATION ONLY. CONTRACTOR MAY AT HIS OPTION DEVIATE FROM THESE PROCESS DETAILS.

\*SWE APPROVAL  
SYM PR 10042-9

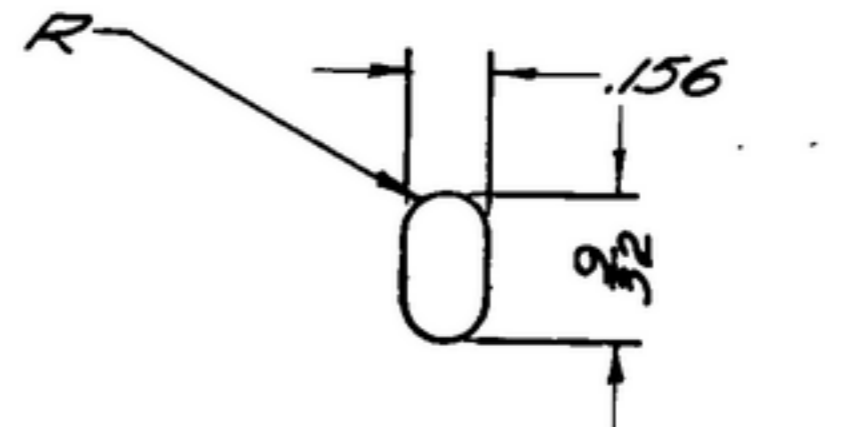
REVISIONS			
SYM	DESCRIPTION	DATE	APPROVAL
A <sub>6</sub>	A <sub>1</sub> - NOTE 2 WAS SILK SCREENING METHOD, & REMOVED COLLINS PROCESS METHOD (NOTE 3). A <sub>2</sub> - WAS A SILK SCREEN DWG. CALL-OUT. A <sub>3</sub> - REMOVED 7/8 X 3/32 CALL-OUT. A <sub>4</sub> - ADDED DIMENSION SILK SCREENING ON VIEW. A <sub>5</sub> - ADDED THK. DIM. A <sub>6</sub> - 5052 WAS 52S.	4 NOV 59	4242B-PC-59-A1-51. REV'D PME



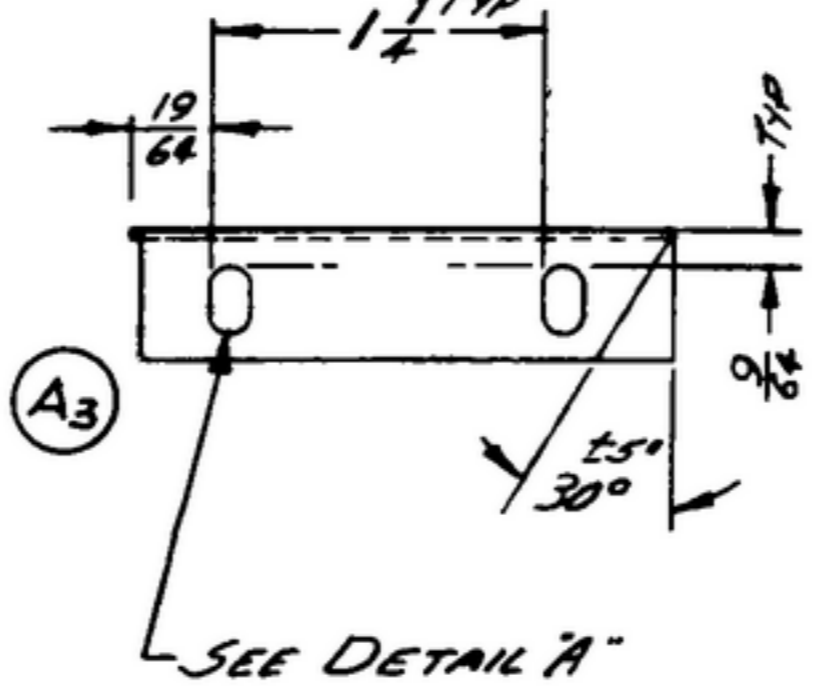
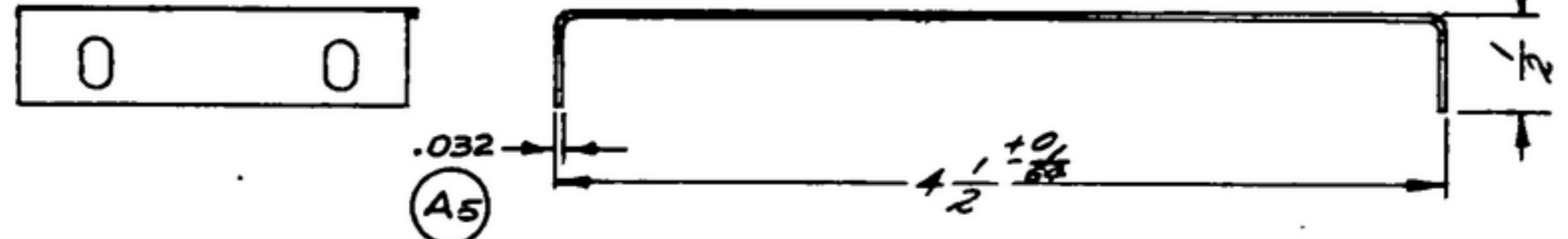
ALUMINUM ALLOY, 5052 TEMPER H34, PER SPEC QQ-A-318

FINISH: E513 PER SPEC MIL-F-14072  
\* COLLINS 558 0035 00

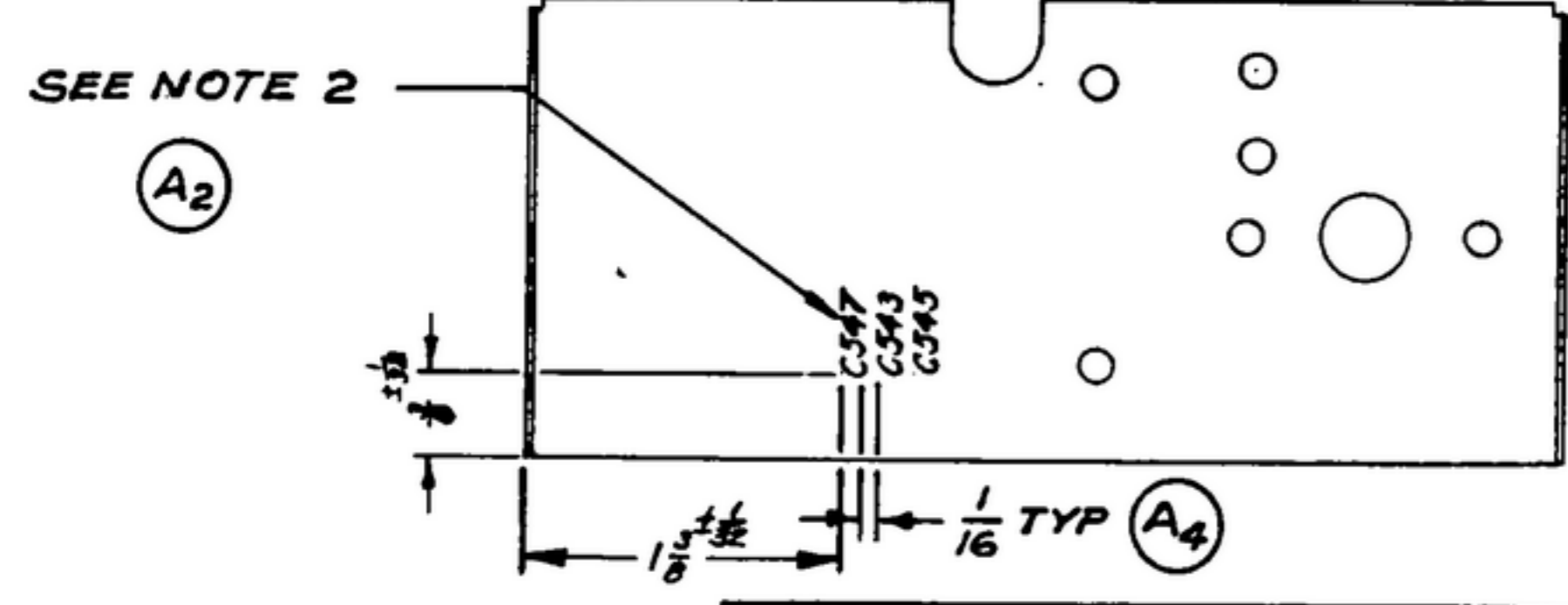
- NOTES:
- 1.- 1/16 MAX INSIDE BEND RADIUS.
  - 2.- ALL CHARACTERS TO BE 3/32 HIGH GOTHIC TYPE PER SPEC MIL-M-13231 GROUP II. COLOR TO BE BLACK, COLOR CHIP NO. 27038 PER FED STD. 595. MARKING TO BE CENTRALLY LOCATED ± 1/32 UNLESS OTHERWISE SHOWN. COVER DESIGNATIONS WITH 1 COAT OF VARNISH PER MIL-V-173 TYPE II.



DETAIL A  
SCALE 2/1, 4 PLACES



SEE DETAIL A



558 0012 002 - 2 REF SM-B-248789 SILK SCREEN SHIELD					
558 0011 002 - 1 REF SM-B-248788 SILK SCREEN SHIELD					
QUANTITY	PART NO.	DESCRIPTION	DATE	EXT. SPEC.	
LIST OF MATERIAL					
COLLINS PART NO. 558 0035 003					

DRAWN HENRY		CHECKED [Signature]		APPROVED		COLLINS RADIO CO. 9000 34200 1000 14214-PH 51-93		DEPARTMENT OF THE ARMY SIGNAL CORPS ENGINEERING LABORATORIES	
558 0342 002		SM-B-248792		SC-A-248775		SIGNAL CORPS		FORT MONMOUTH NEW JERSEY	
COLLINS NO.		NEXT ASSY		USED ON		REVIEWED PME		SHIELD-I.F.	
APPLICATION		OFF				APPROVED HLY PME			
						DATE 28 DEC 55		SCALE 1/1	
								SM-C-249010	

UNLESS OTHERWISE SPECIFIED:  
DECIMAL DIMENSIONS INCLUDING HOLE SIZES MAY VARY ±.008  
FRACTIONAL DIMENSIONS INCLUDING HOLE SIZES MAY VARY ±1/64  
MACHINED ANGLES MAY VARY ±1°  
SHEARED ANGLES MAY VARY ±.25°  
BROKEN ANGLES MAY VARY ±.1°  
ECCENTRICITY BETWEEN ANY DIAMETERS ON THE SAME CENTERLINE SHALL NOT EXCEED .010 TOTAL INDICATOR READING.  
ALL DIMENSIONS ARE FINISH DIMENSIONS INCLUDING APPLIED FINISH AND ARE GIVEN IN INCHES.

WHEN REFERRING TO THIS DRAWING STATE DRAWING NO., APPLICABLE ISSUE SYMBOL, IF ANY, AND DATE